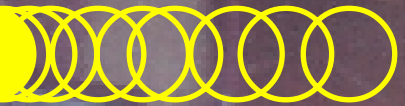


SPRINKLER FABRICATION EQUIPMENT



FABRICATE SPRINKLER PIPE quickly and easily with Cypress Welding Equipment's complete line of SPRINKLER FABRICATION MACHINES. This easy to use equipment increases production and quality with reduced costs.



CYPRESS WELDING EQUIPMENT, INC. ©

A Subsidiary of Weld Tooling Corporation

P.O. BOX 690168, HOUSTON, TEXAS 77269 Telephone: 1-281-469-0746 Fax: 1-281-469-9354
<http://www.cypressweld.com>



SPRINKLER FABRICATION EQUIPMENT

CB-1P (CBO-1020) AIR PLASMA MACHINE



Cut from 3/4" to 12" (19 mm to 300 mm) diameter holes in pipe up to 3/8" (9.5 mm) wall thickness, utilizing the Air Plasma process.

The CB-1P (CBO-1020) AIR PLASMA MACHINE allows you to cut precise, clean holes in 5 to 15 seconds with no distortion of the pipe.

The machine may be operated continuously in either direction without hose or power cable wrap-up.

The machine is equipped with machine torch, power source control cables, PM drive motor and variable speed control for rotation, horizontal and vertical adjustment.

It has switches for manual rotation without cutting as well as automatic rotation with cutting.

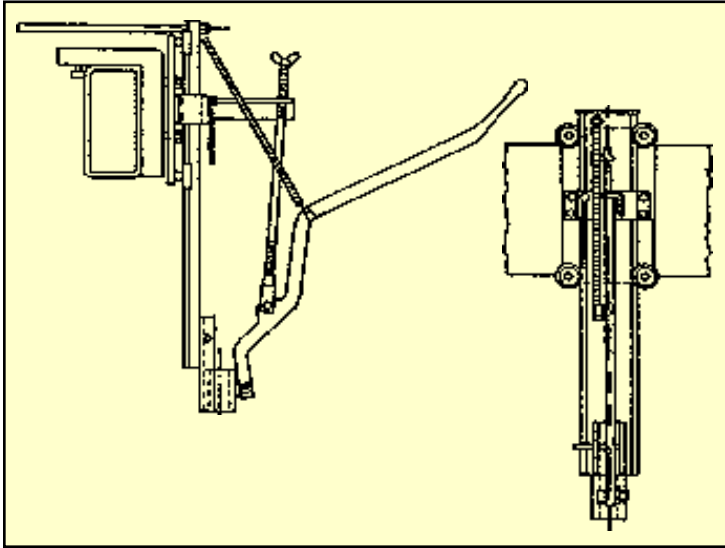
TECHNICAL DATA

Rating:	60% Duty Cycle	Rise and Fall Cam:	5" (125 mm)
Input Voltage:	220 VAC Single Phase	Piercing Capability:	3/8" (9.5 mm)
Cutting Diameter:	3/4" - 12" O.D. (19 - 300 mm)	Cutting Capability:	1/2" (12 mm)
		Height:	29" (737 mm)
Rotation Speed:	20 - 400 ipm (500 - 10,000 mm/min)	Net Weight:	98 lbs. (44 kg)

NOTE: Alternate power sources are available for wall thicknesses up to 1" (25 mm). Saddle cut diameters *should not* exceed 2/3 the diameter of the pipe.



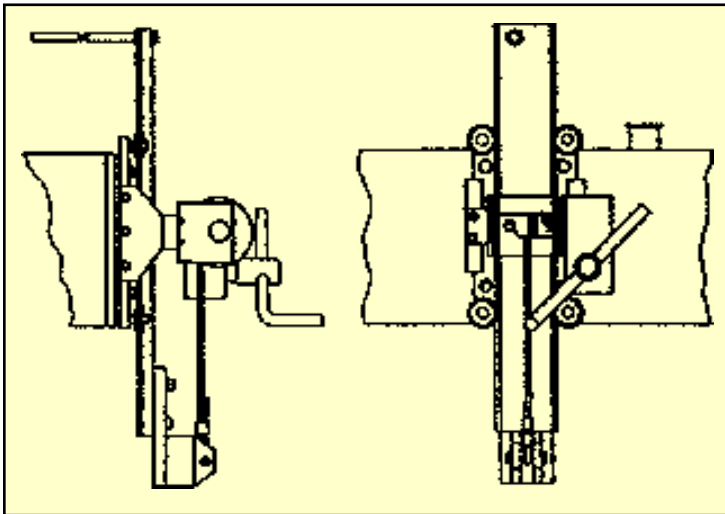
SPRINKLER FABRICATION EQUIPMENT



CWO-4530 MODEL 151 CARRIAGE

May be used **only with** CW-5 CIRCLE WELDERS. The carriage, which is mounted on a standard mono-rail, is used to move the welder along a length of pipe.

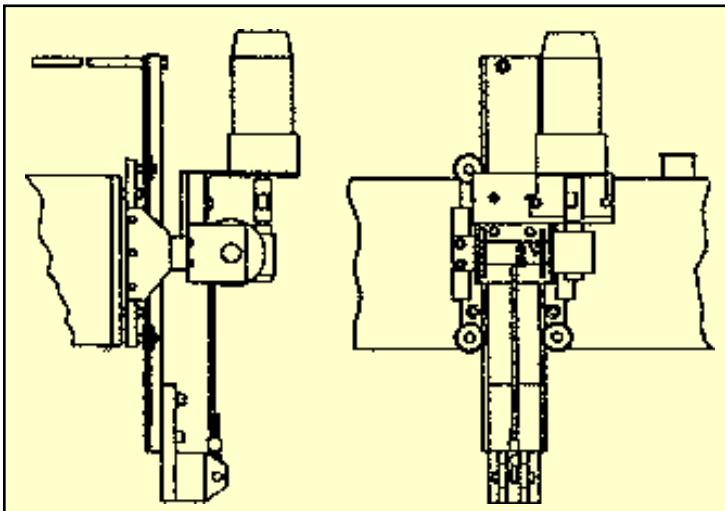
Carriage Net Weight: 72 lbs. (32.7 kg)



CWO-4540 MODEL 151P CARRIAGE

This carriage, which is mounted on a standard mono-rail, is used with the CB-1P AIR PLASMA MACHINE. A winch holds the machine and prevents the machine from falling into the hole when the slug drops. This carriage may also be used with CW-5 CIRCLE WELDERS.

Carriage Net Weight: 82 lbs. (37.2 kg)



CWO-4550 MODEL 151M CARRIAGE

May be used with either the CW-5 CIRCLE WELDER or the CB-1P AIR PLASMA MACHINE. The primary use is with machines on "bridge crane" type setups, to allow the operator to raise or lower the machine while reaching over a number of pieces of pipe. The carriage may also be used on standard monorails.

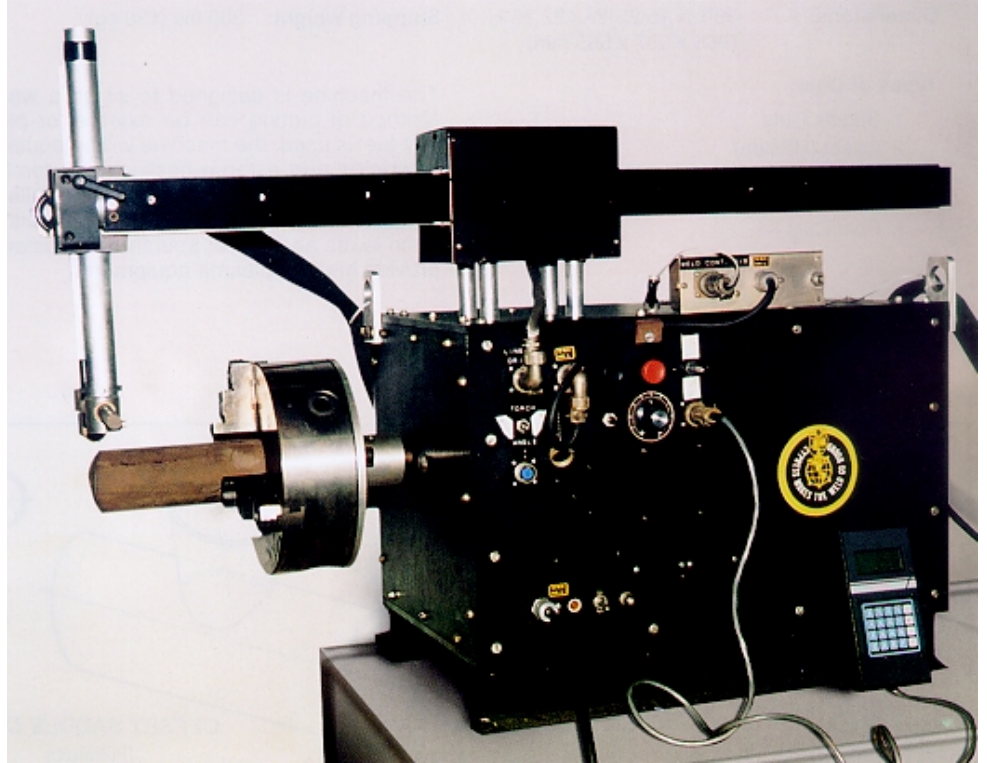
Carriage Net Weight: 92 lbs. (41.7 kg)



SPRINKLER FABRICATION EQUIPMENT

SE-4P (SEO-4520) PROGRAMMABLE SADDLE & ELBOW CUTTER

The SE-4P programmable machine will cut saddles, laterals, miters, offsets (hillsides) and elbows using a micro-processor and handheld terminal. Oxyfuel or Plasma may be used. Cutting diameter 1" - 12" (25-300 mm). (Maximum length of pipe to be cut, 18" [450 mm]). Maximum rotation speed is 3.7 rpm, which is 47 ipm (1160 mm/min) on 4" (100 mm) O.D.'s.



TECHNICAL DATA

Cutting Diameter:	1-12" O.D. (25 - 300 mm)	Net Weight:	200 lbs. (91 kg)
		Dimensions:	38"L x 15.25"W x 22.25"H
Rotation Speed:	0.2-3.7 rpm (47 ipm) (1160 mm/min)	Input Power:	115 VAC

OSCILLATION FOR CW-5

- The CWO-3943 PENDULUM TYPE OSCILLATOR is used to weld out-of-position with MIG.
- Wire sizes used with oscillation are: .035" and .045" (.8 mm and 1.1 mm)
- The width of oscillation is determined by a mechanical cam. Maximum width of oscillation is 3/4" (19 mm)
- Oscillators may be added to existing machines in operation or as an option on new machines.
- Please consult the factory for oscillator applications.

CW0-3671 STEP ADAPTOR

Used to center the welder in the coupling. The adaptor holds the coupling in place, eliminating the need for tacking. The adaptor is for coupling sizes: 1/2", 3/4", 1", 1-1/4", 1-1/2", 2", 2-1/2", 3", 3-1/2", 4".





SPRINKLER FABRICATION EQUIPMENT

CW-5 (CWO-1500 FOR MIG AND FLUX CORED WELDING)

The CW-5 (CWO-1500) CIRCLE WELDER is designed for single pass or multipass welding of couplings on sprinkler pipe, utilizing MIG or the Flux Cored process, with gas shielding.

The machine is equipped with its own wire feeder, welding control, drive motor, speed control for rotation, horizontal and vertical adjusting racks, rise and fall cam, gun and cable assembly, burnback control, 50 feet (15 m) of control cable, and wire reel adaptor for 30 lb. (14 kg) spools.

Welding control has wire feed speed (amperage control), cold wire inch, wire direction and weld switches.



TECHNICAL DATA

Amperage:	0-300 AMPS	Cam Range:	5" (125 mm)
Input Voltage:	115 VAC	Welding Diameter:	1-12" (25-300 mm)
Voltage:	0-50 VAC	Shielding Gas:	Solenoid Control
Wire Sizes:	.035-.062" (.8-1.6 mm)	Height:	29" (737 mm)
Rotation Speed:	3-130 ipm (75-3300 mm/min.)	Net Weight:	135 lbs. (61 kg)



SPRINKLER FABRICATION EQUIPMENT

**TYPICAL SETUP FOR
SPRINKLER FABRICATION**

